

FIGUREN UIT DE MAATSOORTEN 2/4, 3/4 en 4/4

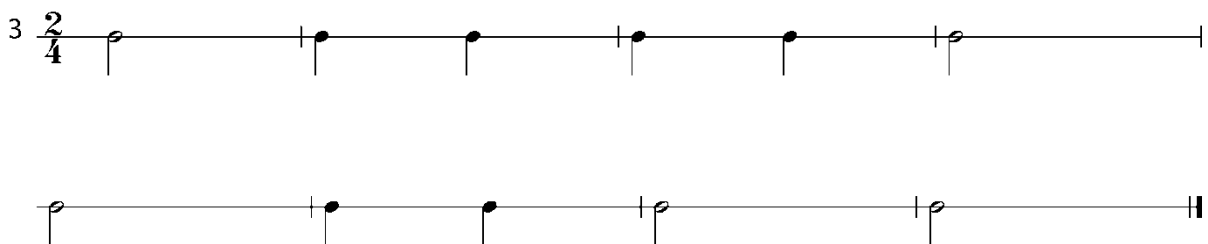
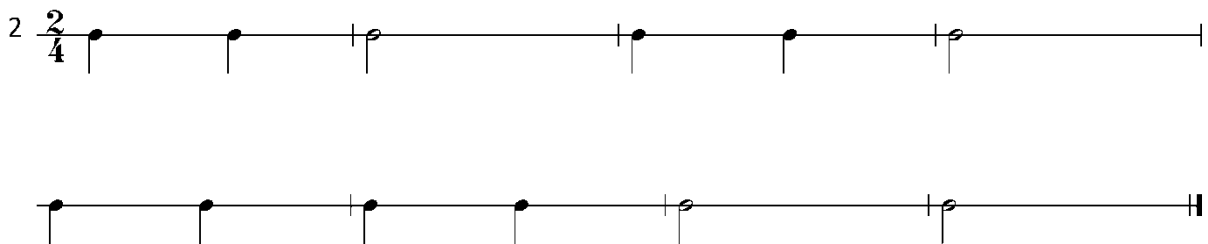
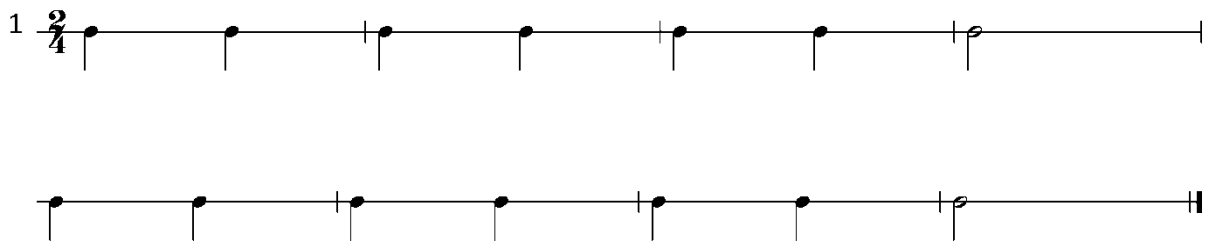
HALVE NOOT en KWARTNOOT

Halve noot = 2 tellen

TO-HO

Kwartnoot = 1 tel

TA



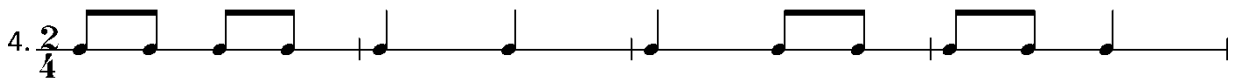
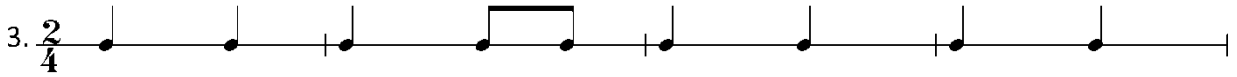
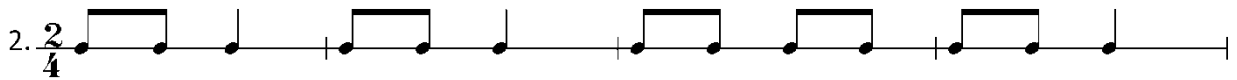
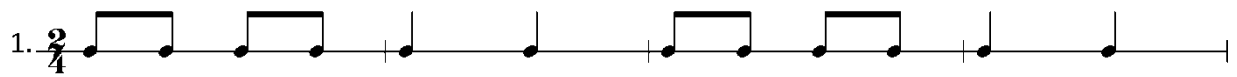
KWARTNOOT en ACHTSTE NOTEN

Kwartnoot = 1 tel

TA

Twee achtste noten = 1 tel

TI-TI



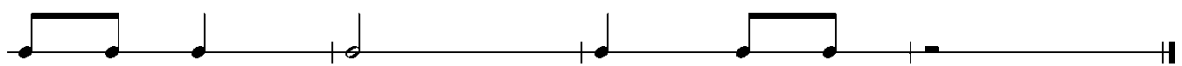
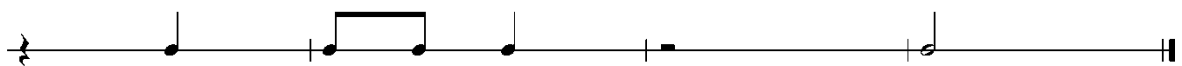
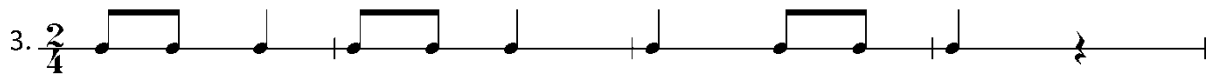
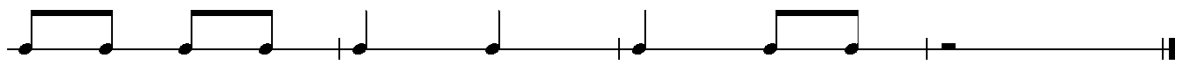
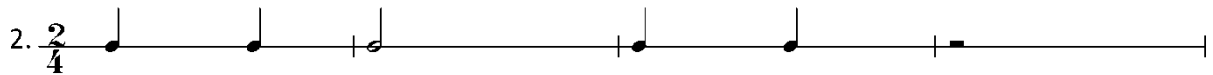
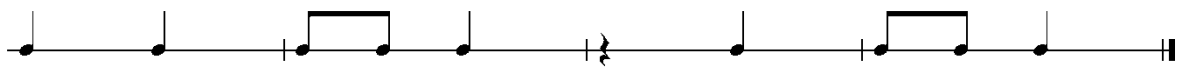
HALVE RUST en KWARTRUST

Kwartrust = 1 tel

RUST

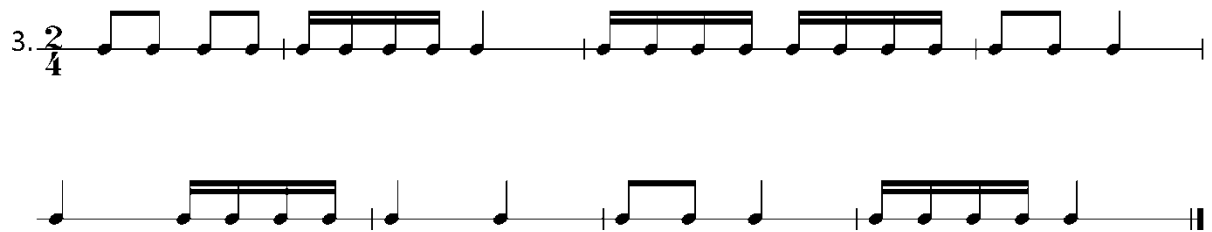
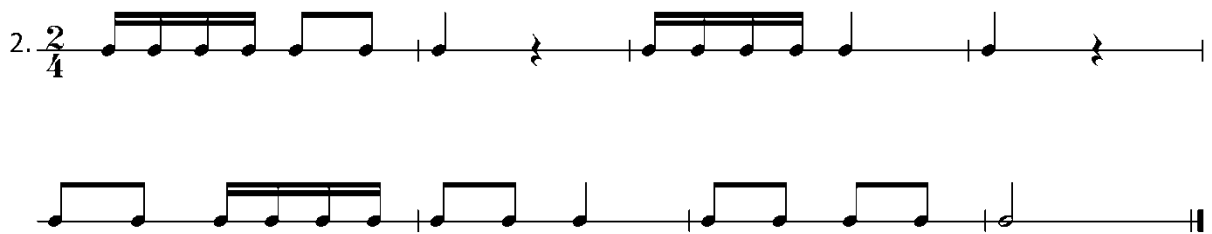
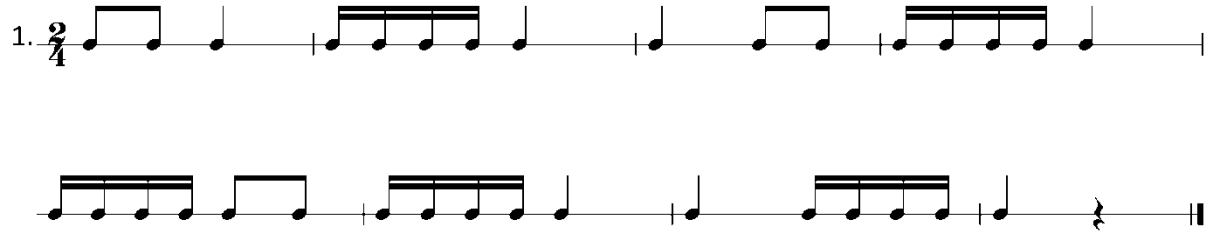
Halve rust = 2 tellen

PAU-ZE



ZESTIENDE NOTEN

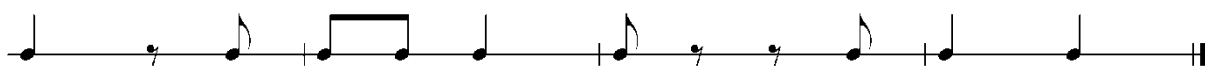
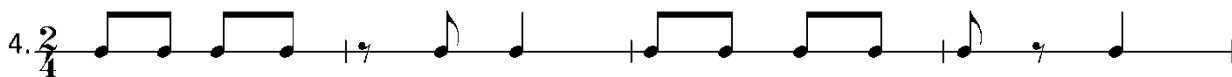
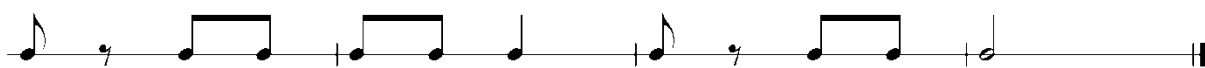
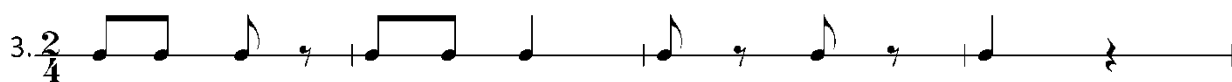
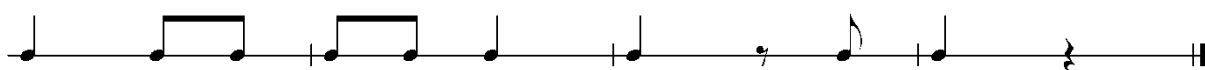
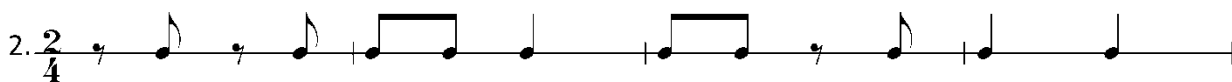
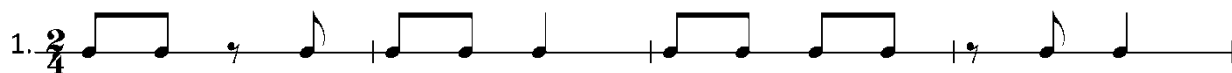
Vier zestiende noten = 1 tel TIRI-TIRI



ACHTSTE RUST en ACHTSTE NOOT

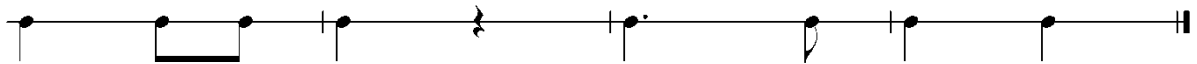
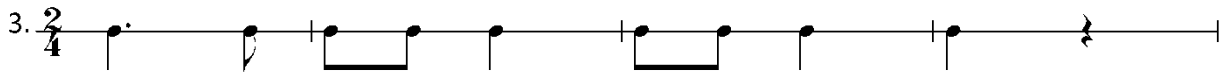
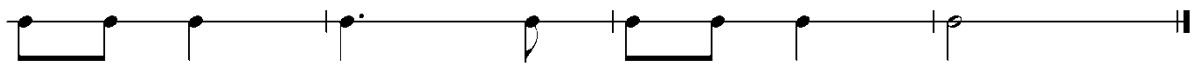
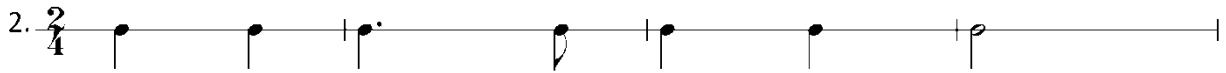
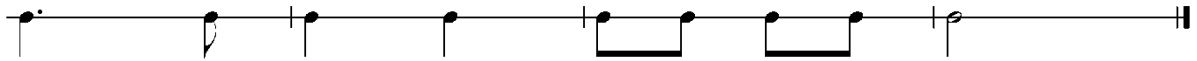
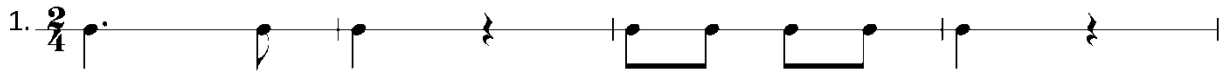
Achtste rust + achtste noot = 1 tel en TI

Achtste noot + achtste rust = 1 tel TI en



GEPUNTEERDE KWARTNOOT en ACHTSTE NOOT

Gepunteerde kwartnoot + achtste noot = 2 tellen TA -i TI



ACHTSTE NOOT + 2 ZESTIENDEN

Achtste noot + 2 zestiende noten = 1 tel TI- TIRI

2 zestiende noten + achtste noot = 1 tel TIRI- TI

1. $\frac{2}{4}$

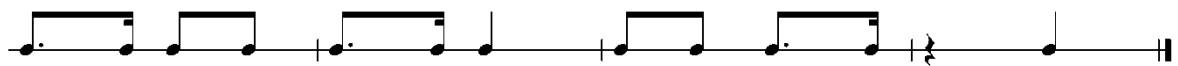
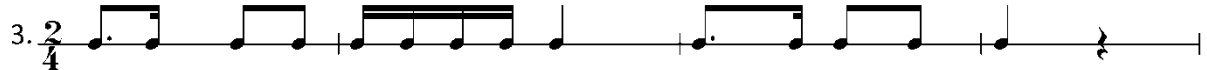
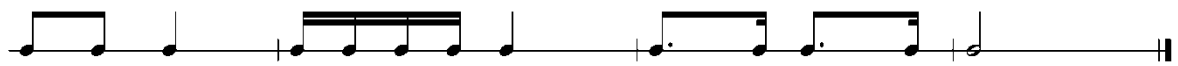
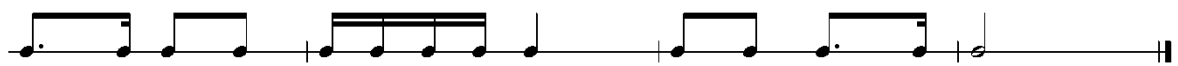
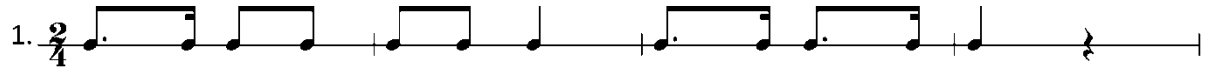
2. $\frac{2}{4}$

3. $\frac{2}{4}$

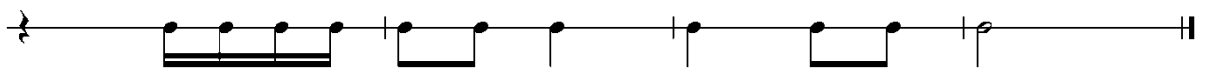
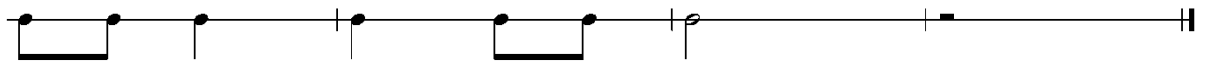
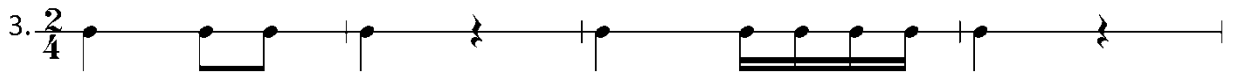
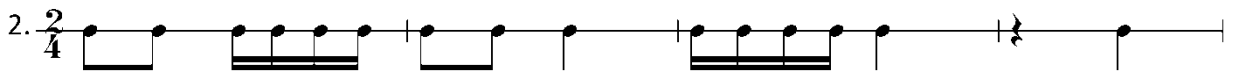
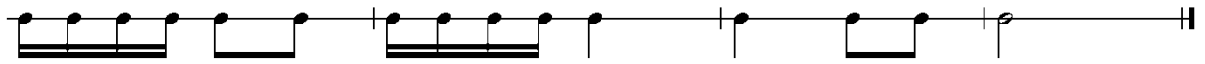
4. $\frac{2}{4}$

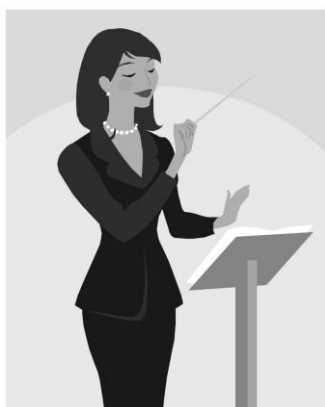
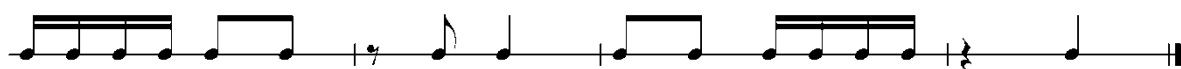
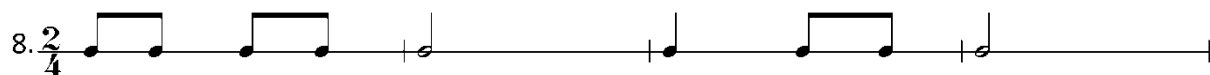
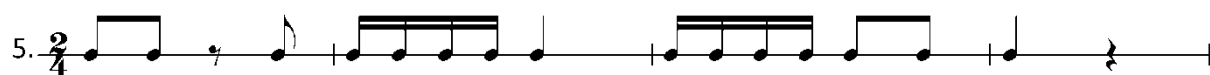
GEPUNTEERDE ACHTSTE NOOT + 1 ZESTIENDE NOOT

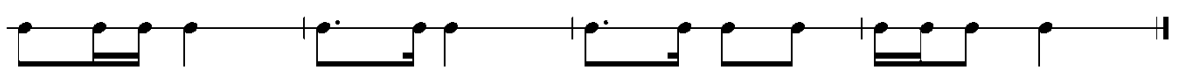
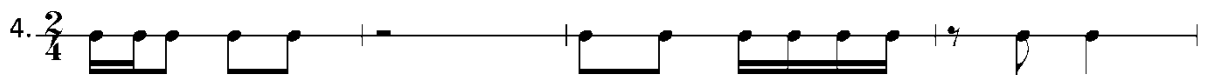
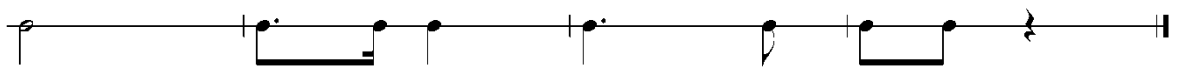
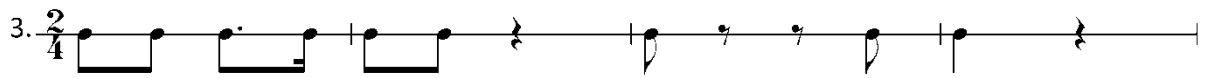
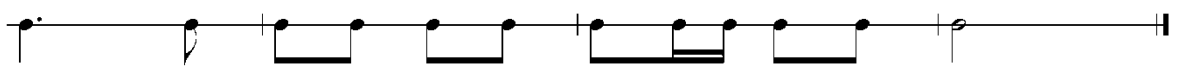
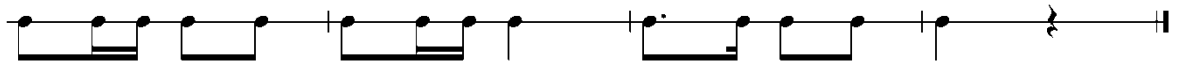
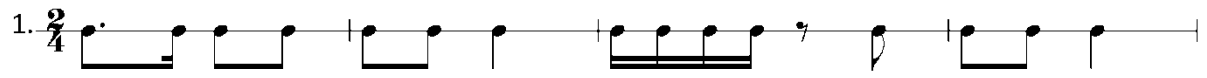
Gepunteerde achtste noot + 1 zestiende noot = 1 tel TIM- RI



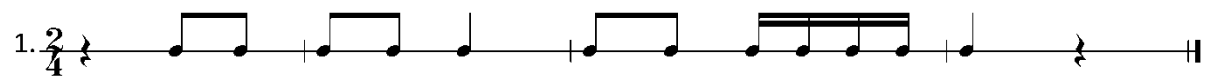
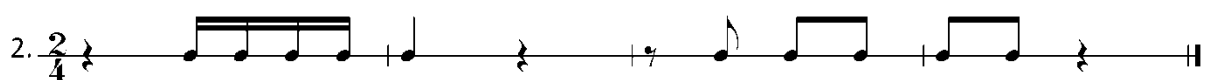


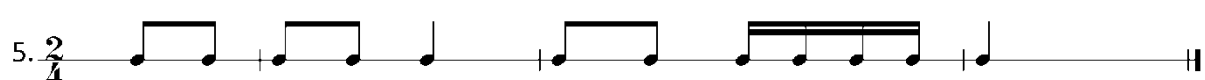
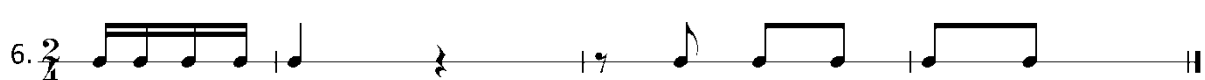

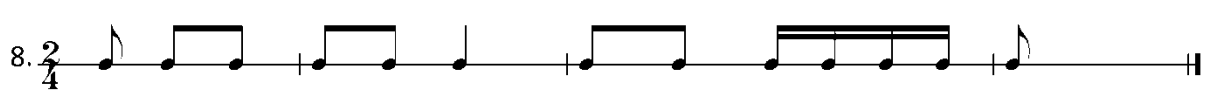
FIGUURTJES-MIX





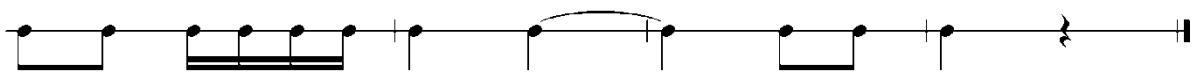
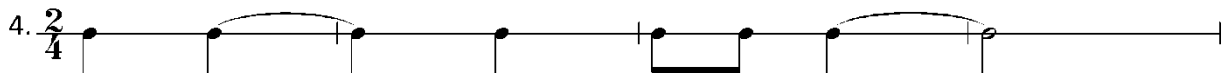
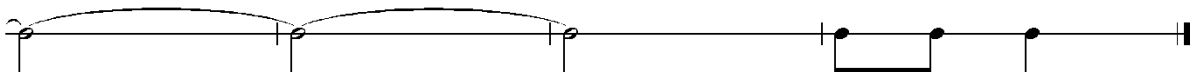
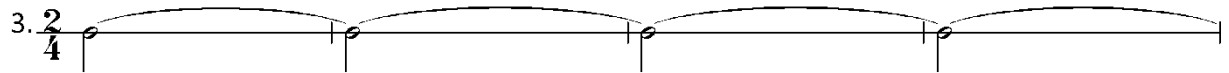
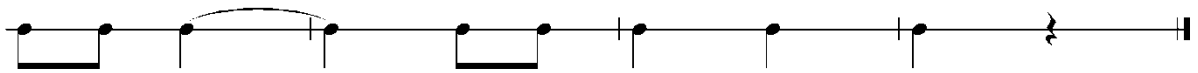
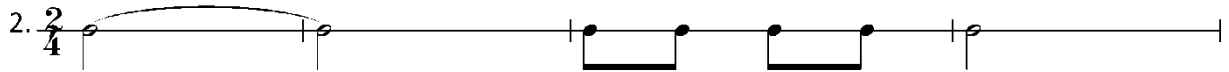
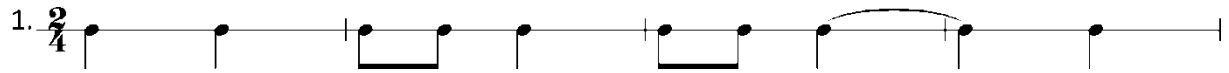


DE OPMAAT

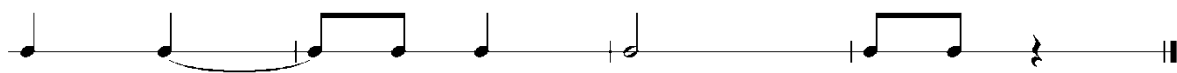
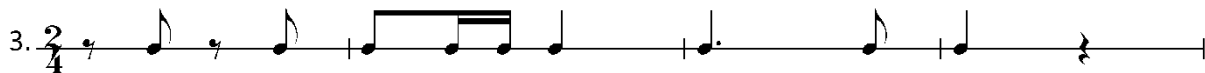
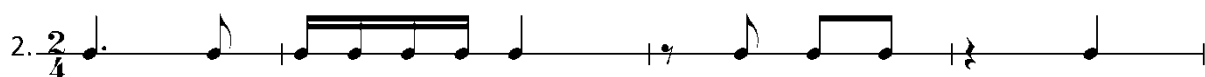
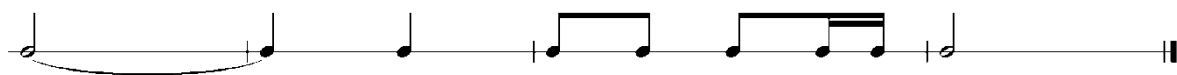
1. 
2. 
3. 
4. 
5. 
6. 
7. 
8. 

HET KOPPELTEKEN

Het koppelteken ver bindt 2 noten die dezelfde notennaam hebben. Zo worden deze twee noten één klank.



FIGUURTJES-MIX mét KOPPELTEKENS



SYNCOPE

1. $\frac{2}{4}$

Exercise 1, first staff: A musical staff in 2/4 time. It begins with a quarter note on G4, followed by a half note on A4. A slur covers the next two eighth notes: G4 and A4. This is followed by a quarter rest, a quarter note on G4, a quarter note on F4, and a quarter note on E4. A second slur covers the next two eighth notes: G4 and A4. The staff ends with a quarter rest and a bar line.

Exercise 1, second staff: A musical staff in 2/4 time. It begins with a quarter note on G4, followed by a quarter note on F4, a quarter note on E4, and a quarter note on D4. A slur covers the next two eighth notes: G4 and A4. This is followed by a quarter note on G4, a quarter note on F4, and a quarter note on E4. The staff ends with a quarter rest and a bar line.

2. $\frac{2}{4}$

Exercise 2, first staff: A musical staff in 2/4 time. It begins with a quarter note on G4, followed by a quarter note on F4, and a quarter note on E4. A slur covers the next two eighth notes: G4 and A4. This is followed by a quarter note on G4, a quarter note on F4, a quarter note on E4, and a quarter note on D4. The staff ends with a quarter rest and a bar line.

Exercise 2, second staff: A musical staff in 2/4 time. It begins with a quarter note on G4, followed by a quarter note on F4, a quarter note on E4, and a quarter note on D4. A slur covers the next two eighth notes: G4 and A4. This is followed by a quarter note on G4, a quarter note on F4, and a quarter note on E4. The staff ends with a quarter rest and a bar line.

3. $\frac{2}{4}$

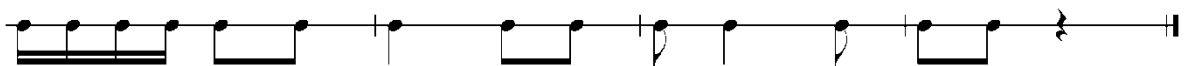
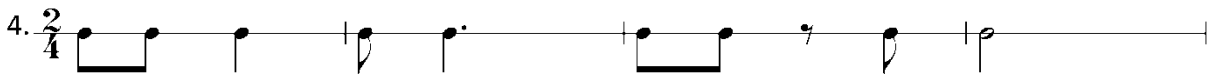
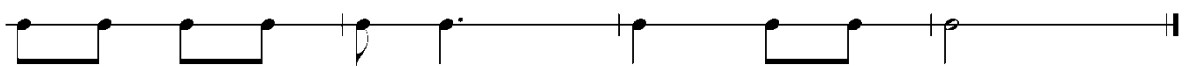
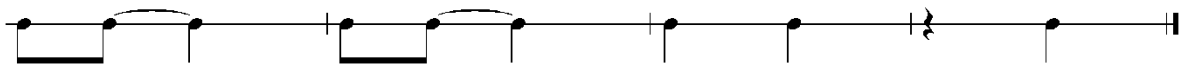
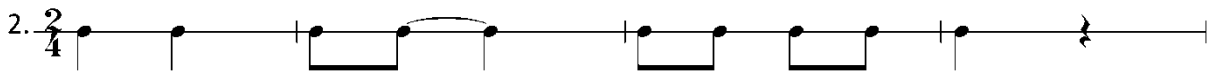
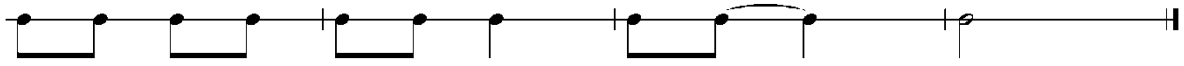
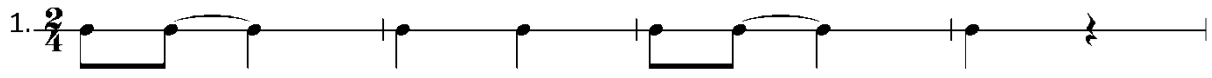
Exercise 3, first staff: A musical staff in 2/4 time. It begins with a quarter note on G4, followed by a quarter note on F4, and a quarter note on E4. A slur covers the next two eighth notes: G4 and A4. This is followed by a quarter note on G4, a quarter note on F4, and a quarter note on E4. The staff ends with a quarter rest and a bar line.

Exercise 3, second staff: A musical staff in 2/4 time. It begins with a quarter note on G4, followed by a quarter note on F4, and a quarter note on E4. A slur covers the next two eighth notes: G4 and A4. This is followed by a quarter note on G4, a quarter note on F4, and a quarter note on E4. The staff ends with a quarter rest and a bar line.

4. $\frac{2}{4}$

Exercise 4, first staff: A musical staff in 2/4 time. It begins with a quarter note on G4, followed by a quarter note on F4, and a quarter note on E4. A slur covers the next two eighth notes: G4 and A4. This is followed by a quarter note on G4, a quarter note on F4, and a quarter note on E4. The staff ends with a quarter rest and a bar line.

Exercise 4, second staff: A musical staff in 2/4 time. It begins with a quarter note on G4, followed by a quarter note on F4, and a quarter note on E4. A slur covers the next two eighth notes: G4 and A4. This is followed by a quarter note on G4, a quarter note on F4, and a quarter note on E4. The staff ends with a quarter rest and a bar line.



1. $\frac{2}{4}$

Musical notation for exercise 1, first staff. It starts with a treble clef and a 2/4 time signature. The melody consists of quarter notes: G4, A4, B4, C5, B4, A4, G4, F4, E4, D4, C4. There is a fermata over the final C4 note.

Musical notation for exercise 1, second staff. It continues the melody from the first staff with quarter notes: C4, D4, E4, F4, G4, A4, B4, C5, B4, A4, G4, F4, E4, D4, C4. There is a fermata over the final C4 note.

2. $\frac{2}{4}$

Musical notation for exercise 2, first staff. It starts with a treble clef and a 2/4 time signature. The melody consists of quarter notes: G4, A4, B4, C5, B4, A4, G4, F4, E4, D4, C4. There is a fermata over the final C4 note.

Musical notation for exercise 2, second staff. It continues the melody from the first staff with quarter notes: C4, D4, E4, F4, G4, A4, B4, C5, B4, A4, G4, F4, E4, D4, C4. There is a fermata over the final C4 note.

3. $\frac{2}{4}$

Musical notation for exercise 3, first staff. It starts with a treble clef and a 2/4 time signature. The melody consists of quarter notes: G4, A4, B4, C5, B4, A4, G4, F4, E4, D4, C4. There is a fermata over the final C4 note.

Musical notation for exercise 3, second staff. It continues the melody from the first staff with quarter notes: C4, D4, E4, F4, G4, A4, B4, C5, B4, A4, G4, F4, E4, D4, C4. There is a fermata over the final C4 note.

4. $\frac{2}{4}$

Musical notation for exercise 4, first staff. It starts with a treble clef and a 2/4 time signature. The melody consists of quarter notes: G4, A4, B4, C5, B4, A4, G4, F4, E4, D4, C4. There is a fermata over the final C4 note.

Musical notation for exercise 4, second staff. It continues the melody from the first staff with quarter notes: C4, D4, E4, F4, G4, A4, B4, C5, B4, A4, G4, F4, E4, D4, C4. There is a fermata over the final C4 note.

5. $\frac{2}{4}$

Musical notation for exercise 5, first staff. It starts with a treble clef and a 2/4 time signature. The melody consists of quarter notes: G4, A4, B4, C5, B4, A4, G4, F4, E4, D4, C4. There is a fermata over the final C4 note.

Musical notation for exercise 5, second staff. It continues the melody from the first staff with quarter notes: C4, D4, E4, F4, G4, A4, B4, C5, B4, A4, G4, F4, E4, D4, C4. There is a fermata over the final C4 note.

6. $\frac{2}{4}$

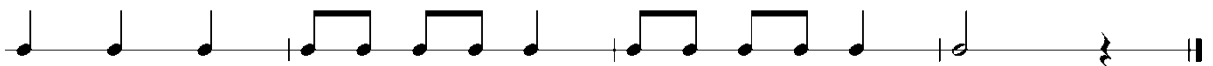
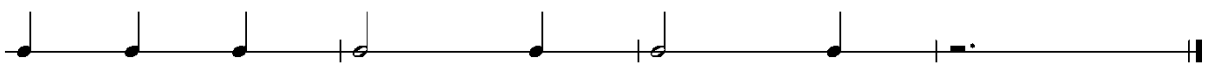
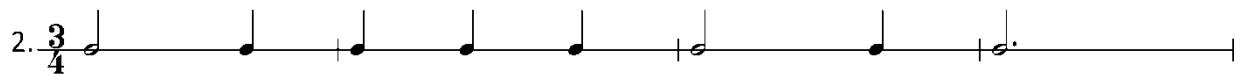
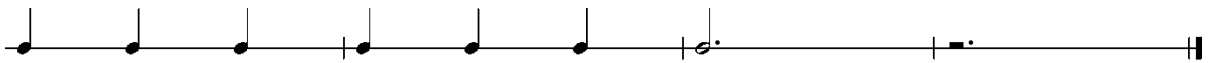
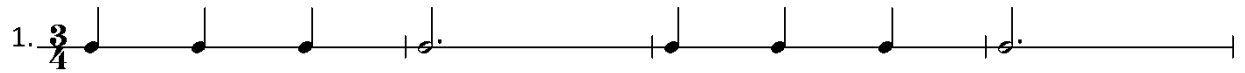
Musical notation for exercise 6, first staff. It starts with a treble clef and a 2/4 time signature. The melody consists of quarter notes: G4, A4, B4, C5, B4, A4, G4, F4, E4, D4, C4. There is a fermata over the final C4 note.

Musical notation for exercise 6, second staff. It continues the melody from the first staff with quarter notes: C4, D4, E4, F4, G4, A4, B4, C5, B4, A4, G4, F4, E4, D4, C4. There is a fermata over the final C4 note.

GEPUNTEERDE HALVE NOOT en GEPUNTEERDE HALVE RUST

Gepunteerde halve noot = 3 tellen TO-HO-HOOI

Gepunteerde halve rust = 3 tellen 1 2 3



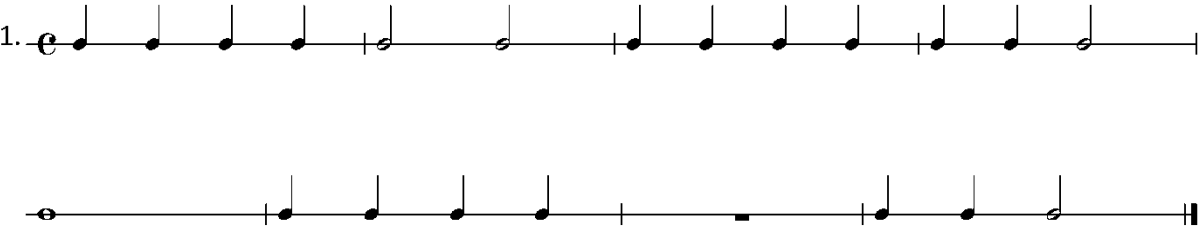
HELE NOOT en HELE RUST

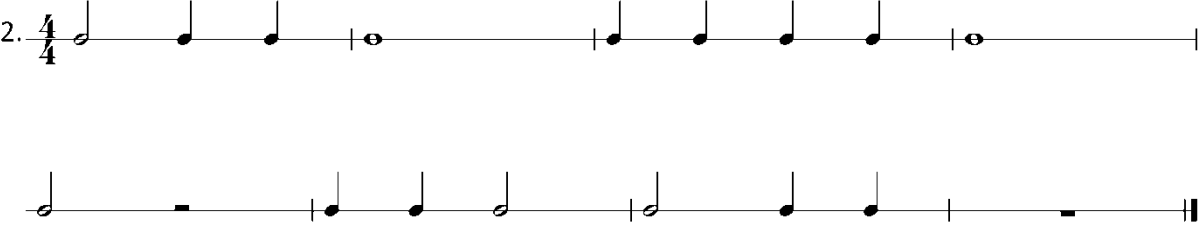
Hele noot = 4 tellen

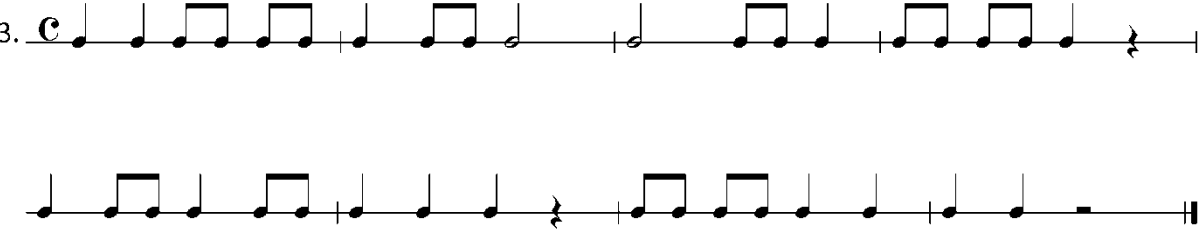
To-ho-ho-hooi

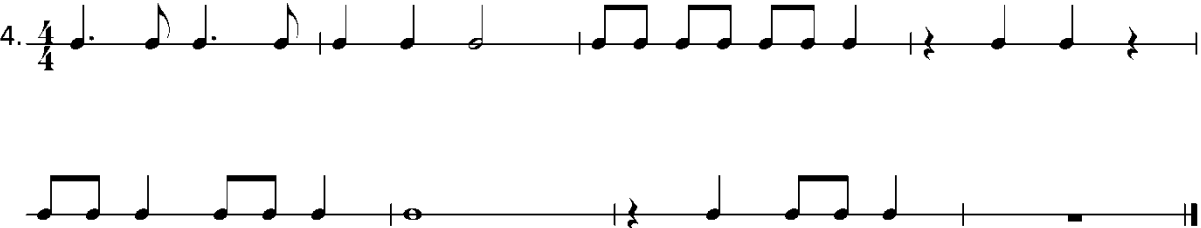
Hele rust = 4 tellen

1 2 3 4

1. 

2. 

3. 

4. 

FIGUREN UIT DE MAATSOORT 6/8

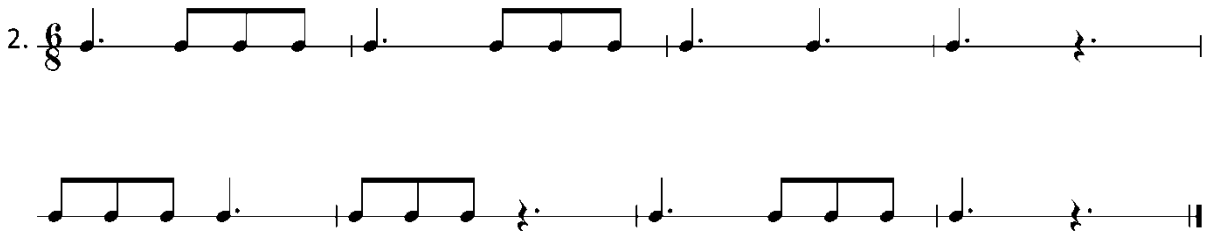
Gepunteerde kwartnoot = 1 tel TAI

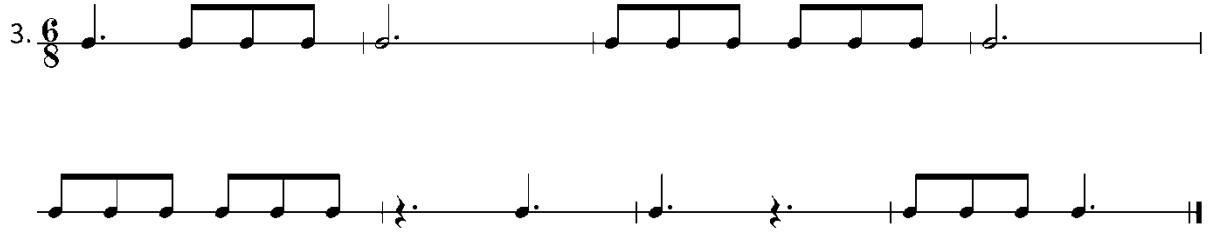
Drie achtste noten = 1 tel TI-TI-TI

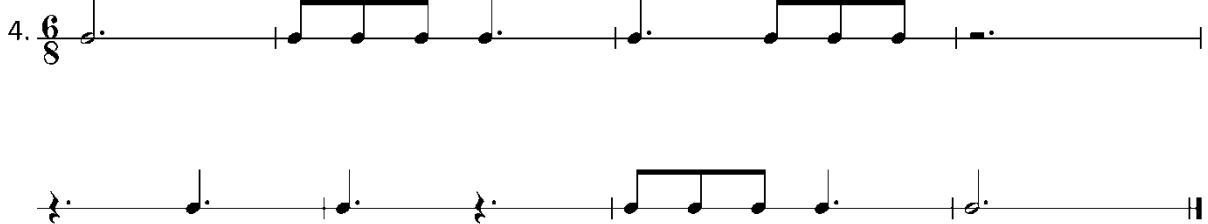
Gepunteerde kwartrust = 1 tel RUST

Gepunteerde halve noot = 2 tellen PAU-ZE

1. 

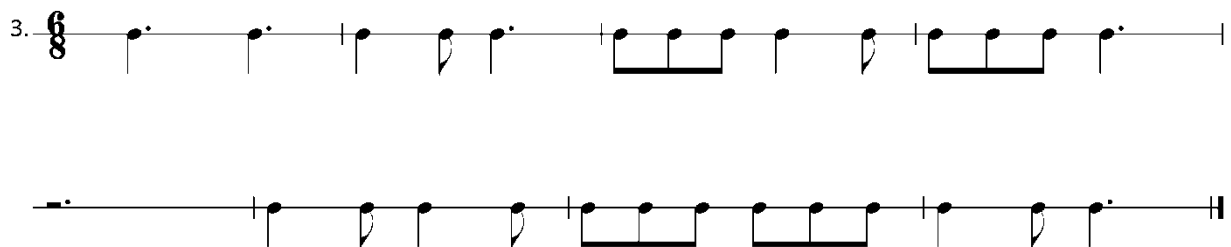
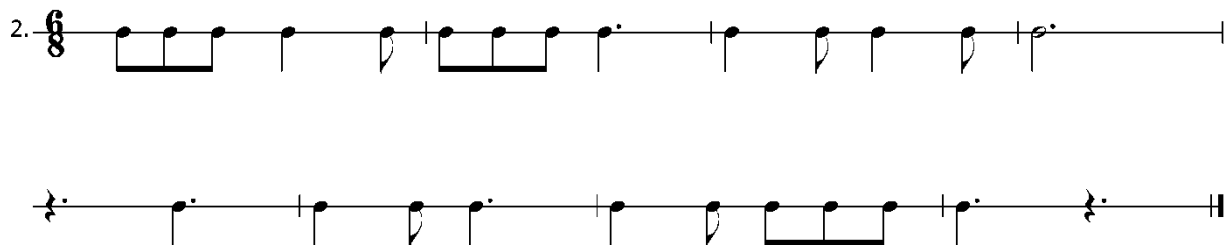
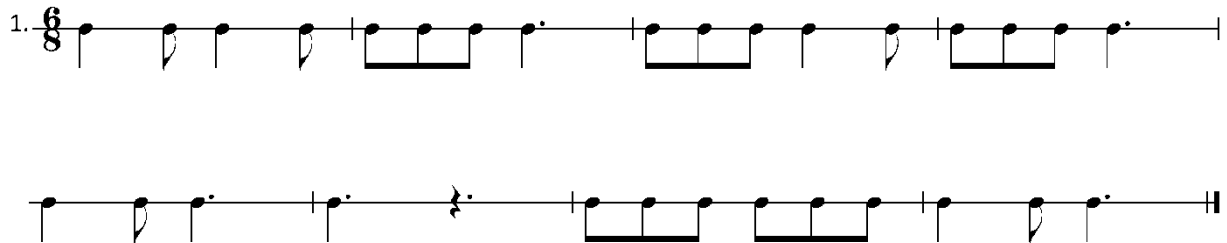
2. 

3. 

4. 

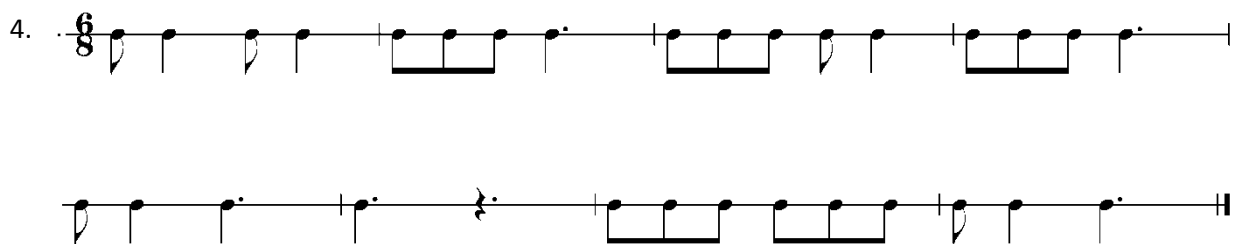
KWARTNOOT – ACHTSTE NOOT

Kwartnoot – achtste noot = 1 tel TA-A TI



ACHTSTE NOOT – KWARTNOOT

Achtste noot – kwartnoot = 1 tel TI TA-A



1.

2.

FIGUURTJES-MIX

2.

2.

4.

4.